

capture
a trip



DELHI LEH DELHI

WITH UMLING LA

10 NIGHTS | 11 DAYS



**SHARK
TANK
INDIA**

OUR FUNDING STORY: A NEW CHAPTER BEGINS

We're excited to share a proud milestone with you. **Aakash Anand, Founder of Bella Vita Organic,** has joined us as a strategic investor, believing in our vision of building meaningful, community-led travel experiences.

After our **SHARK TANK INDIA** journey, we're now also backed by:

Mohit Yadav (CEO & Co-Founder, Minimalist)

Kunal Bahl (Founder, Titan Capital)

Your trust and love make moments like these possible.

Here's to many more unforgettable journeys together.





CUSTOMER Reviews ★★★★★



Abhishek Bindal
5 reviews · 2 photos

★★★★★ 4 months ago

I recently had an incredible trip from Delhi to Leh Ladakh with Capture a Trip. The journey was well-organized and breathtakingly beautiful. Our trip captain saurav bro was exceptional, ensuring everyone had a fantastic experience. Thanks for the memorable trip.



Dishant Dash
4 reviews · 17 photos



★★★★★ 6 months ago

Ladakh is a once in a lifetime experience which not many get to experience! It's always written in the stars for such extravagant trips where the journey is equally important as the destination! Capture a trip as a group were extremely professional and covered everything that was promised within the itinerary. The stay, food, comfort and hospitality was warm and commendably welcoming! This was once in a lifetime experience as we were a group of school friends travelling together and capture a trip made it etched in our memories!



Sahil Babbar
1 review · 3 photos



★★★★★ 6 months ago

My recent Ladakh trip arranged by Capture a Trip with trip captains Arpit, Vaibhav, and Tushar was exceptional. Their meticulous planning, deep knowledge of the region, and focus on safety ensured a seamless and enriching experience. They fostered great camaraderie, making the trip enjoyable and memorable. Highlights included the stunning Pangong Lake, Nubra Valley, and Khardung La pass.



Dev Joshi
1 review · 4 photos



★★★★★ 6 months ago

My Ladakh tour with Capture a Trip was simply outstanding, thanks to Tushar, Vaibhav, and Arpit! From the moment I inquired about their tours until the last day of my trip, their professionalism and dedication were evident.

Their expertise in crafting the itinerary ensured we experienced the best of Ladakh. Their meticulous planning ensured every detail, from accommodation to transportation, was flawless. Our guide, was incredibly knowledgeable, enriching our journey with insights into Ladakhi culture and history.

The entire team's passion for Ladakh shone through, making the trip not only enjoyable but also educational and deeply immersive. I highly recommend Capture a Trip for anyone seeking a memorable and well-organized Ladakh adventure. Thank you, Tushar, Vaibhav, and Arpit, for an unforgettable experience!



Neetesh Jain
4 reviews · 8 photos



★★★★★ 4 months ago

recently had an incredible trip from Delhi to Leh Ladakh with Capture a Trip. The journey was well-organized and breathtakingly beautiful. Our trip captain sourav bro was exceptional, ensuring everyone had a fantastic experience. We enjoyed playing games like UNO during trip .Highly recommend this company for an unforgettable adventure!



1



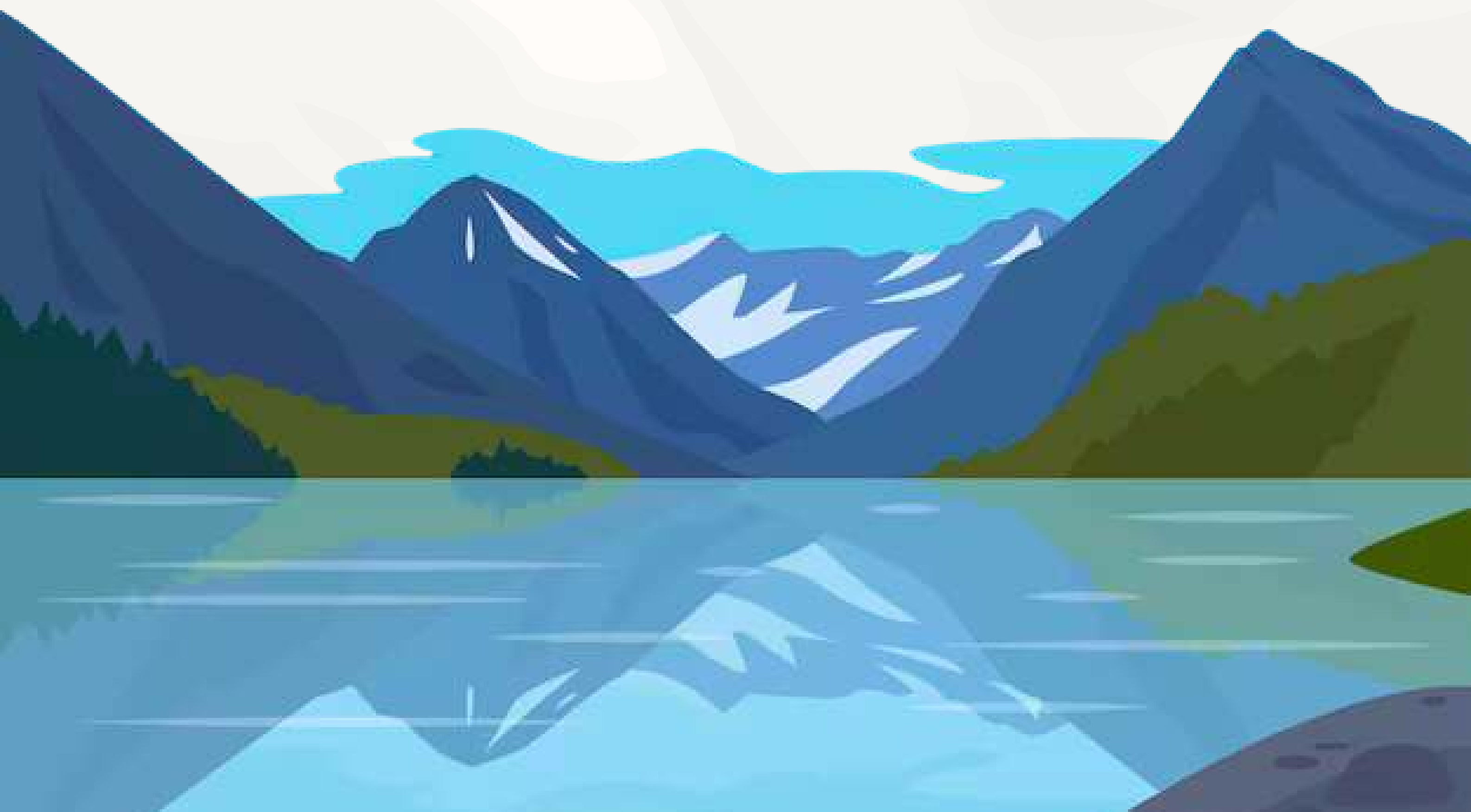
capture
a trip

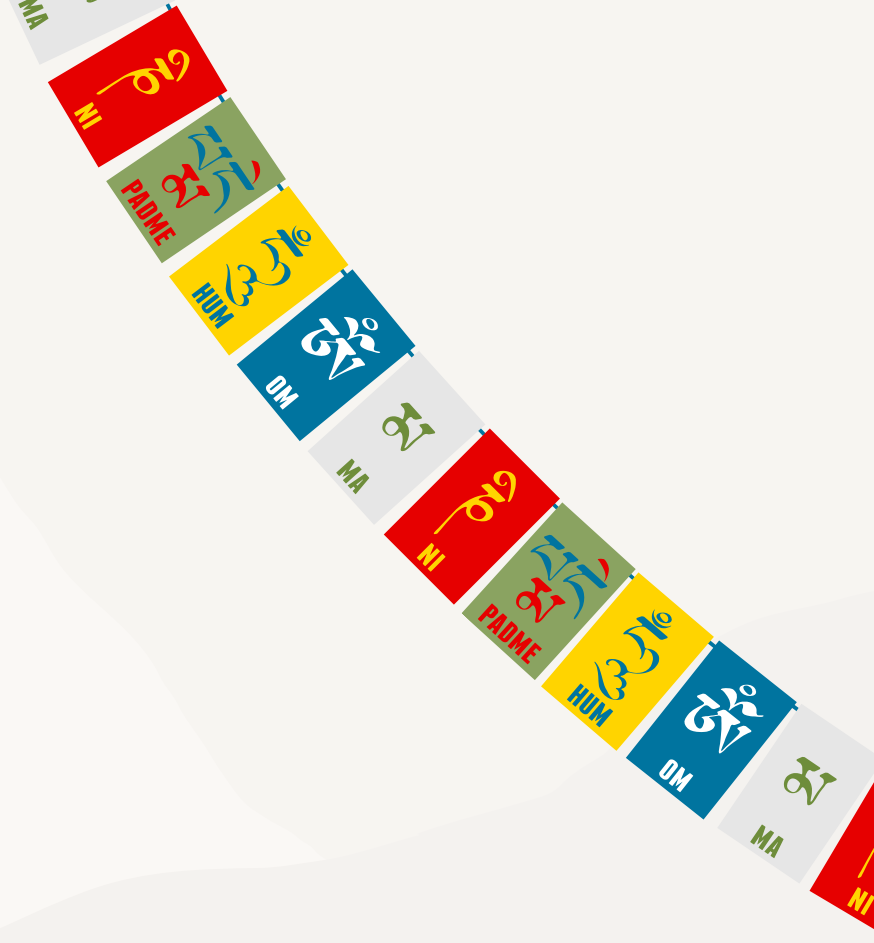




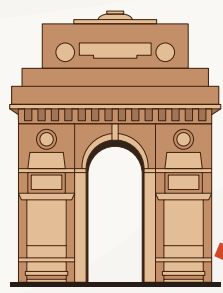
ABOUT DESTINATION **LADAKH**

Ladakh, known as the "Land of High Mountain Passes," is a stunning, arid region in northern India. Renowned for its rugged peaks, desert landscapes, and serene monasteries, it spans 60,000 square miles (100,000 sq. km). Once part of Jammu and Kashmir, it became a Union Territory in 2019. The towering Himalayas separate Ladakh from Kashmir Valley, enhancing its isolation. Often called "Little Tibet," Ladakh shares deep cultural ties with Tibet, where Tibetan Buddhism and traditions thrive amid its breathtaking natural beauty.





BRIEF MAP



DELHI

MANALI



SARCHU



LEH



SHANTI STUPA

NUBRA
VALLEY



PANGONG
TSO

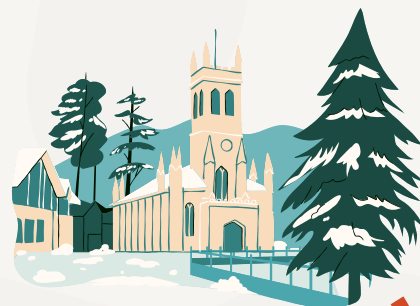


UMLING LA

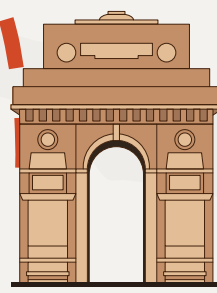
CHUMATHANG



JISPA



MANALI



DELHI



DAY 0

DELHI → MANALI | OVERNIGHT JOURNEY

- Assemble at the pickup point by 8 PM (tentative) in Delhi, Kashmere Gate (tentative).
- Meet trip captains and attend a brief orientation session.
- Board an overnight Volvo bus to Manali, excited for the journey ahead.
- Dinner en route at a roadside restaurant (decided by the Volvo vendor).

NOTE: THIS IS AN OVERNIGHT JOURNEY; KEEP ESSENTIALS IN YOUR CARRY BAG.





DAY 1

ARRIVAL IN MANALI | ACCLIMATISATION & SELF-EXPLORATION | OVERNIGHT STAY IN MANALI

- Arrive in Manali and check into your hotel.
- Freshen up and enjoy a hearty breakfast at the hotel.
- Attend a welcome briefing to learn about the itinerary, altitude guidelines, and upcoming travel plans.
- Spend the rest of the day at leisure for light exploration or relaxation.
- You may visit nearby attractions such as Hadimba Temple, Vashisht Temple Hot Springs, Jogini Waterfall, or Mall Road on your own.
- Return and stay overnight in Manali.

NOTE: AVOID HEAVY PHYSICAL ACTIVITY, ALCOHOL, AND SMOKING FOR PROPER ACCLIMATISATION.





DAY 2

MANALI → SARCHU | HIGH-ALTITUDE DRIVE | OVERNIGHT IN SARCHU

- Start your day with an early breakfast before leaving for Sarchu.
- Travel through the Atal Tunnel and enjoy the scenic Sissu Valley.
- Pass Keylong, Jispa, and Darcha, stopping at Deepak Tal and Zing Zing Bar for photos.
- Cross Suraj Tal Lake and Baralacha La Pass (16,040 ft).
- Arrive in Sarchu, check into your campsite, and rest.
- Enjoy dinner under the starry sky and stay overnight in Sarchu.

HIGHLIGHTS: ATAL TUNNEL, SISSU VALLEY, KEYLONG, JISPA, DEEPAK TAL, ZING ZING BAR, SURAJ TAL, BARALACHA LA PASS (16,040 FT)

NOTE: SARCHU IS AT A HIGH ALTITUDE (14,070 FT); HYDRATE, LAYER CLOTHING, AND AVOID EXERTION.





DAY 3

SARCHU → LEH VIA NAKEE LA, LACHUNG LA, TANGLANG LA & MORE | OVERNIGHT STAY IN LEH

- Depart from Sarchu after breakfast and ride through the famous Gata Loops (21 hairpin turns), known for their sharp hairpin bends.
- Cross the high mountain passes of Nakee La (15,547 ft) and Lachung La (16,600 ft).
- Pass through Pang, where you will stopover for lunch.
- Traverse the vast More Plains (40 km straight road), a surreal high-altitude plateau
- Cross through Tanglang La (17,480 ft), each offering panoramic Himalayan views.
- Check in to the hotel, relax after the long ride, enjoy dinner, and stay overnight in Leh.

HIGHLIGHTS: GATA LOOPS, NAKEE LA, LACHUNG LA, TANGLANG LA, MORE PLAINS,

RIDERS' NOTE: RIDE WITHIN THE CONVOY; AVOID OVERSPEEDING, STUNTS, OFF-ROADING, OR DEVIATION.





DAY 4

LEH LOCAL SIGHTSEEING | SANGAM, MAGNETIC HILL & SHANTI STUPA | OVERNIGHT STAY IN LEH

- Have breakfast at the hotel.
- Visit the [Hall of Fame Museum](#), [Gurudwara Pathar Sahib](#), [Magnetic Hill](#), and the confluence point of the Indus and Zaskar River
- Explore [Shanti Stupa](#) and enjoy panoramic views and sunset photography.
- Take an optional stroll through [Leh Market](#) for shopping and cafés.
- Return to the hotel for dinner and overnight stay.

HIGHLIGHTS: SANGAM CONFLUENCE, MAGNETIC HILL, GURUDWARA PATHAR SAHIB, SHANTI STUPA, LEH MARKET

NOTE: ENTRY TICKETS NOT INCLUDED.

CAFÉ SUGGESTIONS: CAFÉ DE LEH, TIBETAN KITCHEN, BON APPÉTIT, GESMO, GERMAN BAKERY, LEH CAFÉ, OPEN HAND CAFÉ, WANDERERS TERRACE, SKY WOK, ALCHI KITCHEN





DAY 5

LEH → NUBRA VALLEY VIA KHARDUNG LA & DISKIT | OVERNIGHT STAY IN NUBRA

- Depart from Leh after enjoying a wholesome breakfast
- Ride towards Nubra Valley while crossing **Khardung La (18,080 ft)**, one of the highest motorable roads in the world.
- Later, explore the **Diskit Monastery**, the largest and oldest monastery in Ladakh, famous for the **100-foot Maitreya Buddha**.
- Arrive in **Nubra Valley** and explore the cold desert landscape and **Hunder Sand Dunes**.
- Optional activities such as **double-hump camel rides or ATV rides** can be enjoyed at personal expense.
- Check in to the campsite, enjoy a bonfire (weather permitting), have dinner, and stay overnight in **Nubra Valley**.

HIGHLIGHTS: KHARDUNG LA (18,080 FT), NUBRA VALLEY LANDSCAPES, DISKIT VILLAGE, HUNDER SAND DUNES, OPTIONAL CAMEL SAFARI & ATV ACTIVITIES

NOTES: NIGHTS ARE COLD; CARRY WARM LAYERS. AVOID STRENUOUS ACTIVITY AT HIGH PASSES. THE NETWORK MAY BE LIMITED.



DAY 6

NUBRA → PANGONG TSO VIA DISKIT MONASTERY | OVERNIGHT STAY AT PANGONG

- Start your day with breakfast at the camp.
- Drive to **Pangong Tso Lake (13,860 ft)** and enjoy the scenic journey. Explore the lakefront, visit the bollywood movies shooting points (**3 Idiots & Jab Tak Hai Jaan**), watch the sunset, and enjoy **stargazing**.
- Check into lakeside cottages and explore the lake surroundings.
- Spend the evening stargazing and have dinner at the cottages.

HIGHLIGHTS: PANGONG TSO (COLOUR-CHANGING LAKE)

NOTES: PANGONG & NUBRA HAVE LIMITED ELECTRICITY AND NETWORK. TEMPERATURES DROP SHARPLY; CARRY WARM LAYERS.





DAY 7

PANGONG → HANLE | OVERNIGHT STAY IN HANLE

- Depart from **Pangong** after breakfast and drive through the untouched landscapes of.
- Pass through remote settlements such as **Chushul**, **Tsaga Village**, and **Loma**, offering glimpses of high-altitude life.
- Reach **Hanle (approx. 15,000 ft)**, one of the highest inhabited villages in India, located on the ancient Silk Route.
- Check into homestays or cottages, relax, and acclimatise to the altitude.
- Enjoy dinner and stay overnight in Hanle.

HIGHLIGHTS: REZANG LA WAR MEMORIAL, HANLE OBSERVATORY (OPTIONAL), STARGAZING

NOTES: HANLE IS REMOTE; LIMITED FACILITIES, NETWORK, AND ELECTRICITY. LAYER UP FOR COLD NIGHTS.





DAY 8

HANLE → MIG LA / UMLING LA PASS → HANLE | OVERNIGHT STAY IN HANLE

- After breakfast, head out for an adventurous ride to **Umling La (19,040 ft)** (the highest motorable road before Mig La) or **Mig La Pass (19,400 ft)**, the world's highest motorable road.
- Ascend through barren, high-altitude terrain to reach one of the highest motorable roads in the world.
- Spend time at the summit capturing photographs and enjoying the sense of achievement.
- Return to **Hanle** and enjoy the evening **stargazing** under crystal-clear skies.
- Dinner and overnight stay in Hanle.

HIGHLIGHTS: MIG LA PASS, UMLING LA PASS, PANORAMIC HIMALAYAN LANDSCAPES

NOTE: MIG LA PASS VISIT DEPENDS ON PERMITS, WEATHER, AND ROAD ACCESSIBILITY. IN CASE MIG LA IS INACCESSIBLE DUE TO SNOWFALL, LANDSLIDES, OR SAFETY CONCERNS, THE TOUR WILL BE REROUTED TO UMLING LA PASS, ANOTHER ICONIC HIGH-ALTITUDE LOCATION.

THE DECISION WILL BE MADE BY THE TOUR LEADER TO ENSURE GUEST SAFETY AND THE BEST EXPERIENCE. DUE TO EXTREME ALTITUDE, AVOID OVEREXERTION, WALK SLOWLY AND STAY HYDRATED. KEEP EXTRA WARM LAYERS, AS TEMPERATURES CAN DROP SHARPLY, ESPECIALLY NEAR THE PASS. NETWORK CONNECTIVITY MAY BE UNAVAILABLE THROUGHOUT THE DAY.





DAY 9

HANLE → LEH VIA CHUMATHANG | OVERNIGHT IN LEH

- Have breakfast at Hanle before departure.
- Drive back via Chumathang, stopping at the hot springs, and Upshi for lunch.
- Optionally visit Thiksey Monastery or Shey Palace, if time allows.
- Arrive in Leh, explore markets or cafés, have dinner, and stay overnight.

HIGHLIGHTS: CHUMATHANG HOT SPRINGS, THIKSEY MONASTERY, SHEY PALACE

NOTES: IT IS A LONG TRAVEL DAY; CARRY SNACKS AND WATER. MONASTERY VISITS DEPEND ON DAYLIGHT AND WEATHER.





DAY 10

LEH → JISPA | OVERNIGHT STAY IN JISPA

- Begin your day with a warm breakfast before checking out of your hotel in [Leh](#).
- Start the return journey toward [Himachal Pradesh](#), with Jispa as today's destination.
- Enjoy the scenic drive across high mountain passes, valleys, and open stretches of rugged Himalayan terrain.
- Witness the gradual transition from Ladakh's barren landscapes to the lush greenery of Lahaul.
- [Arrive in Jispa](#) by evening, a quiet village surrounded by alpine charm and snow-capped peaks.
- Check into your camp or hotel, relax, stroll around, or enjoy the crisp mountain air.
- Dinner will be served, followed by an overnight stay in Jispa.

HIGHLIGHTS: SCENIC DRIVE THROUGH MOUNTAINS, ALPINE LANDSCAPES OF JISPA, PEACEFUL VILLAGE STAY

NOTES: TEMPERATURES DROP SIGNIFICANTLY IN THE EVENING; CARRY WARM LAYERS. NETWORK COVERAGE MAY BE LIMITED IN JISPA.



DAY 11

JISPA → MANALI | DEPARTURE FOR DELHI (OVERNIGHT VOLVO)

- Start early with breakfast at the Campsite and check out for the journey to Manali.
- Enjoy breathtaking views of snow-capped peaks, winding roads, and lush valleys along the way.
- Arrive in Manali and spend leisure time exploring [Mall Road, local markets, or cafés](#).
- In the evening, board the overnight Volvo bus to Delhi for a comfortable overnight journey.

HIGHLIGHTS: SCENIC DRIVE FROM JISPA TO MANALI, LEISURE TIME IN MANALI, OVERNIGHT VOLVO JOURNEY TO DELHI

NOTES: REACH THE VOLVO BOARDING POINT ON TIME TO AVOID THE LAST-MINUTE RUSH. CARRY WARM CLOTHING; TEMPERATURES MAY VARY DURING THE DRIVE.



DAY 12

ARRIVAL IN DELHI | TRIP ENDS

- Wake up to the final leg of your journey as the Volvo approaches Delhi in the morning.
- Upon arrival, bid farewell to your travel companions and conclude the trip.
- Carry unforgettable memories, photos, and stories from your Himalayan adventure.

HIGHLIGHTS: COMFORTABLE MORNING ARRIVAL, CONCLUSION OF THE HIMALAYAN EXPEDITION, REFLECTION ON A JOURNEY WELL COMPLETED

NOTES: SCHEDULE ONWARD TRAVEL FROM DELHI WITH BUFFER TIME; FLIGHTS OR TRAINS RECOMMENDED AFTER 12 PM.



INCLUSIONS

- Comfortable accommodation on a double/triple sharing basis in hotels, camps, or homestays
- Total of 20 meals as per itinerary (1 meal Day 1 (B) + 2 meals Day 2 (B+D) + 2 meals Day 3 (B+D) + 2 meals Day 4 (B+D) + 2 meals Day 5 (B+D) + 2 meals Day 6 (B+D) + 2 meals Day 7 (B+D) + 2 meals Day 8 (B+D) + 2 meals Day 9 (B+D) + 2 meals Day 10 (B+D) + 1 meal Day 11 (B))
- All sightseeing, as mentioned in the itinerary
- Volvo transfers: Delhi ⇌ Manali
- Tempo Traveller transfers: Manali ⇌ Leh / Manali ⇌ Sarchu / Manali ⇌ Manali (depending on package)
- Bike rental with fuel included (6 days for Leh-to-Leh, 9 days for Sarchu-to-Sarchu packages)
- Riding gear provided: helmet, gloves (only for riders), jacket, (Level 2) elbow and knee guards
- Dedicated tour leader and bike marshal for convoy management
- Mechanical backup team with on-road assistance
- Backup vehicle and mechanic support
- 24×7 oxygen availability for altitude emergencies
- First-aid kits available at all times
- Inner Line Permits for restricted areas
- Travel insurance included
- All tolls and road taxes included



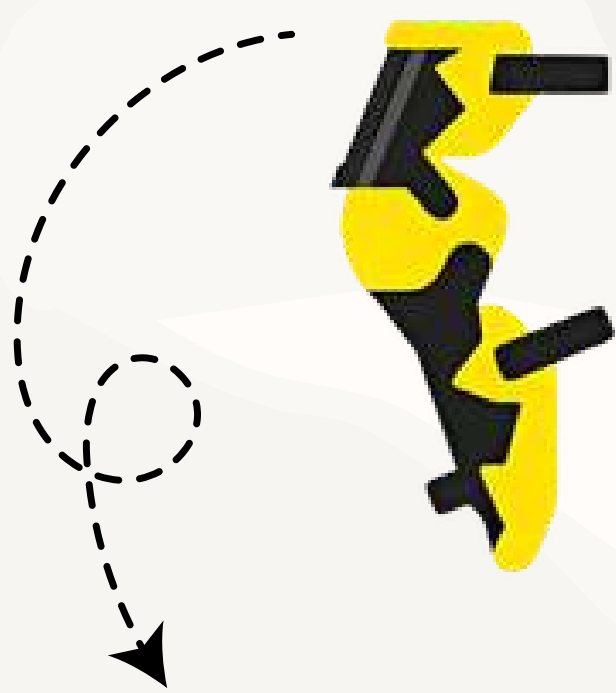
RIDING JACKET WITH OTHER GEARS AND TRAVEL INSURANCE

are also included

RIDER JACKETS



HELMETS



ELBOW GUARDS

KNEE PADS

**TRAVEL
INSURANCE**



(THOUGH IT IS RECOMMENDED YOU TO CARRY YOUR OWN GEARS FOR COMFORT)



EXCLUSIONS

- 5% GST
- Personal expenses (snacks, drinks, laundry).
- Adventure activities (camel rides, ATV rides, etc.) unless specified.
- Tips, optional excursions, or personal guides.
- Expenses arising due to weather, landslides, or roadblocks.
- Meals & beverages not specified (lunch, tea/coffee, snacks, soft drinks, alcohol)
- Entry tickets to attractions
- Optional activities (camel rides, ATV, sightseeing)
- Tips for drivers, guides, or staff
- Photography/videography charges
- Personal shopping & expenses
- Costs due to landslides, roadblocks, or weather
- Additional stay, transport, or food due to unforeseen circumstances
- Bike damage (except engine) – rider's responsibility
- Anything not mentioned in the inclusions



STANDARD PRICING

MODE	COST PER HEAD
TRIPLE SHARING / TEMPO TRAVELLER	₹ 39,999 ₹ 42,999
TRIPLE SHARING / HIMALAYAN 411 (SOLO) LEH TO LEH	₹ 46,999 ₹ 49,999
TRIPLE SHARING / HIMALAYAN 411 (PILLION) LEH TO LEH	₹ 41,999 ₹ 44,999
TRIPLE SHARING / HIMALAYAN 411 (SOLO) SARCHU TO SARCHU	₹ 55,999 ₹ 58,999
TRIPLE SHARING / HIMALAYAN 411 (PILLION) SARCHU TO SARCHU	₹ 49,999 ₹ 52,999
DOUBLE SHARING / TEMPO TRAVELLER	₹ 43,499 ₹ 46,499
DOUBLE SHARING / HIMALAYAN 411 (SOLO) LEH TO LEH	₹ 50,499 ₹ 53,499
DOUBLE SHARING / HIMALAYAN 411 (PILLION) LEH TO LEH	₹ 45,499 ₹ 48,499
DOUBLE SHARING / HIMALAYAN 411 (SOLO) SARCHU TO SARCHU	₹ 59,499 ₹ 62,499
DOUBLE SHARING / HIMALAYAN 411 (PILLION) SARCHU TO SARCHU	₹ 53,499 ₹ 56,499

Book your seats by depositing an advance of **INR 5000/-** per head and rest has to be paid 15 days prior to the time of departure of the trip.



PAYMENT PROCEDURE

IMPS/NEFT TRANSFER

Banking details:

CAPTURE A TRIP INDIA PVT. LTD.

BANK: IDFC

A/C NO. : 10091665679

IFSC: IDFB0020148



captureatrip@okhdfcbank





THINGS TO CARRY

1. Bag & covers

- Rucksack (minimum 60L) & a small backpack
- Backpack rain cover
- Day backpack 10-20 ltr (mandatory)

2. Clothing

- Sun cap & woollen cap
- UV-protected sunglasses
- 2+ pairs of inner thermals
- 1 fleece jacket & 1 warm jacket
- 1 pair of gloves
- 2+ long pants (trek/cargo pants recommended)
- 4 pairs of socks (2 cotton, 2 woollen)
- Trekking shoes with good grip & insulation (ankle-length preferred) at least 2 pairs.
- Mandatory Waterproof shoes for riders.
- Towel
- Rain jacket/poncho

3. Medications

- Diamox (for altitude sickness, advised by doctors)
- Glucose powder/ ORS
- Tablets for headache, diarrhoea, motion sickness & altitude sickness
- Dettol, bandages, cotton
- Strepsils
- Sprain relief spray & crepe bandage
- Any personal medications prescribed by your doctor



THINGS TO CARRY

4. Personal Accessories

- Toothpaste, toothbrush
- Paper soap, shampoo sachet
- Sunscreen (SPF 40+), lip balm, cold cream
- Body spray/ Insect repellent
- Reusable water bottle/flask (avoid plastic)
- LED torchlight
- Power bank & Bluetooth speakers (very important)
- **And most importantly—your spirit for adventure!**

5. Network

- Only postpaid SIMs work in Ladakh
- Recommended: Jio / Airtel / BSNL
- Only Airtel post paid will work in Hanle.

6. Documents to Carry

- Govt. ID proof with photo
- Double-dose vaccination certificate
- Driving license (for bikers)

7. Cash

- Carry ₹5,000 in cash (ATMs available only in Manali/Leh)
- Bikers: Carry ₹10,000, as ₹5,000 is required as a security deposit per bike



THINGS TO CARRY

8. Bike and safety essentials:

- Bungee cords- Secure luggage safety.
- waterproof hand bags/saddle bags.

9. Gadgets and essentials:

- Power Bank
- Charging cables
- Torch & Headlamps
- Bluetooth speakers

10. Other essentials:

- Sanitary pads, wet wipes, tissues.
- Pee safe sprays.
- Face mask/ Balaclawa
- Raincoat



NOTES

- INR 3500/- per person extra for double sharing basis.
- A 450cc bike is also available at an additional cost of ₹7,000
- INR 5,000/- needs to be submitted as security for the bike before the start of the trip. Any damage to the bike, except engine damage, has to be borne directly by the client.
- Biking option is available from 30 April onwards, since it's not safe to ride on the mountain passes during the April month because of Black-ice formation
- All the riders are required to wear a riding jacket at all the times they are riding the bike, else won't be permitted to ride the bike.
- Numerous factors such as weather, road conditions, the physical ability of participants etc. May cause itinerary change. We reserve the rights to change any schedule in the interest of safety, comfort and general wellbeing.
- The age limit of our group departures is 16 to 45 years due to the power packed itineraries that we provide to our travellers. We can customise trips for travellers beyond the mentioned age bracket as a private trip.



CAT CARE

CAT CARE is an initiative by **Capture a Trip** to support those in need, funded by a portion of the profits earned from the trips you book with us.





CANCELLATION POLICY

NO REFUND SHALL BE MADE WITH RESPECT TO THE INITIAL BOOKING AMOUNT FOR ANY OF THE CANCELLATIONS. HOWEVER,

- If cancellations are made 30 days before the start date of the trip, 50% of the trip cost will be charged as cancellation fees.
- If cancellations are made 15-30 days before the start date of the trip, 75% of the trip cost will be charged as cancellation fees.
- If cancellations are made within 0-15 days before the start date of the trip, 100% of the trip cost will be charged as cancellation fees.
- In the case of unforeseen weather conditions or government restrictions, certain activities may be canceled and in such cases, the operator will try his best to provide an alternate feasible activity. However, no refund will be provided for the same.



TERMS & CONDITIONS

1. No Narcotics/Banned Substances: Strictly prohibited. We're not responsible for any consequences.
2. No Weapons, Fireworks, or Toxic Substances: Any violations of Indian law = not our responsibility.
3. Misbehavior = Eviction: Violating rules or misbehaving with fellow travelers will lead to eviction, with no refunds.
4. Outside Camp Safety: We are NOT responsible for your safety outside the campsite.
5. Damage to Property: Lost/damaged campsite items (tents, pillows, mattresses) = full MRP charge.
6. Valid ID: Must carry a govt-issued ID.
7. Guests: Only registered campers are allowed. Inform us if bringing guests.
8. Hot Water: Not guaranteed.
9. Booking Confirmation: Slots at the campsite are confirmed only after full payment.
10. Personal Safety: We're not responsible for injuries, loss, or theft of personal property.
11. Transport Delays: In case of a breakdown, you'll need to wait until repairs are done—no backup transport will be provided.
12. Unforeseen Events: We're not responsible for delays or changes due to natural hazards, accidents, weather, landslides, political closures, or any other unforeseen incidents.
13. Traffic Delays: We're not liable for delays caused by traffic, and sightseeing/activities may be canceled if we don't reach on time.
14. Itinerary Changes: The trip organizer has the right to adjust the itinerary based on on-the-spot conditions.
15. Environment: Please help us keep the environment clean and safe.
16. No Cancellations: Once registered, tickets cannot be exchanged, canceled, or refunded.



capture
a trip

CHECK US OUT

